

# Jeoloji Takvimi

## April

- 1-4 April 1997  
**THE LATE QUATERNARY IN THE EASTERN MEDITERRANEAN** (International Symposium), Ankara, Turkey. • (Neil Roberts) Department of Geography, Loughborough University, Loughborough LE11 3TU. UK. Telefax: 44 1509 223 930; e-mail: c.n.robera@lbn.ac.uk)
- 6-9 April 1997  
**AMERICAN ASSOCIATION OF PETROLEUM GEOLOGISTS** (Annual Meeting), Dallas, Texas, USA. (AAPG Conventions Department, P O Box 979, 1444 S Bouwer Ave., Tulsa, Ok 74101-0979. USA. Phone: 918 560 2679; telefax: 918 560 26841)
- 7-11 April 1997  
**ANALYTICAL BASED MODELING OF GROUNDWATER FLOW**. Nunspeet. The Netherlands. (Conference Secretariat. Analytical based modeling of groundwater flow. Buerweg 51, 1861 CH Bergen. The Netherlands. Phone: +31 (0) 72 58 990 62; telefax: +31 (0) 72 58 99040)
- 8-9 April 1997  
 • **THE NORWEGIAN SHELF—A MATURING AREA OF SIGNIFICANT FUTURE PETROLEUM POTENTIAL**, Siavanger, Norway. (Norwegian Petroleum Society. PO Box. 1897, Vikta, N-0J24 Oslo, Norway. Phone: +47 22 12 90 08; telefax: +47 22 55 46 30)
- 8-10 April 1997  
**PRINCIPAL GENETIC PROBLEMS RELATED TO MINERAL DEPOSITS OF MAGMATIC AFFILIATION**, Moscow, Russia. (N S Bortnikov. Secretary of the Symposium, IGEM RAS. Staromooetny per., 35. Moscow 109017. Russia. Phone: 095 230 8259; telefax: 7 95 230 2719; e-mail: symposium@igem.msk.su)
- 13-16 April 1997  
**UPPER MANTLE HETEROGENEITIES FROM ACTIVE AND PASSIVE SEISMOLOGY** (NATO Advanced research workshop). Moscow Russia. (Professor K Fuchs. Geophysical Institute. Hertzstr 16, D-78167. Karlsruhe. Germany.)
- 14-18 April 1997  
**PLUMES, PLATES AND MINERALISATION** (International Symposium). Pretoria. South Africa. (Professor S A de Waal, Department of Geology. University of Pretoria. Pretoria 0002, South Africa. Phone: 27 12 420 24.54; telefax: 27 12433430; e-mail: ppm97@sciencii.ii.ac.za)
- 17-19 April 1997  
**EARTH'S UPPER MANTLE STRUCTURE BASED ON INTEGRATED GEOLOGICAL AND GEOPHYSICAL STUDIES (EROPROBE Conference)**. Moscow, Russia. (Professor K Fuchs. Geophysical Institute. Hertzstr 16. D-78167. Karlsruhe. Germany.)

- 23 April-3 May 1997  
**INTERNATIONAL ASSOCIATION OF METROLOGICAL SCIENCES** <3lh Scientific Assembly), Rabat, Morocco. CG-D Young. IAHS, Department of Geography., Wilfrid Laurier University, Waterloo. Ont N2L 3C5. Canada. Phone: 1 519 884 1970; telefax: 1 519846 0968; e-mail: 44ians@mach1.wlu.ca)
- 24-29 April 1997  
**PALEOCENE/EOCENE BOUNDARY EVENTS INTIME AND SPACE** (Geological Society of America Penrose Conference). Albuquerque, NM. (if Spencer Lucas, New Mexico Museum of Natural History., 1801 Mountain Road NW, Albuquerque. NM 87110. E-mail: Lucas@darwin.nnmimn-h-a.btl.musnm.us)

## May

- 5-7 May 1997  
 • **ASSOCIATION OF GEOPHYSICISTS OF ALBANIA**, Tirana, Albania. (BurhanCanga. Faculty of Geology and Mining. Tirana, Albania)
- 10-15 May 1997  
 • **PALAEOCUMATIC MODELLING AND ANALYSIS: QUATERNARY PALAEOCUMATE ANALYSIS**, Castelvecchio Pascoli, Italy. (Dr Josip Hendekovic. European Science Foundation, I quai Lezay-Mumésiu 67080 Strasbourg Cedex. France. Phone: +33 3 88 767135; telefax: +33 3 88 366987; e-mail: euresco3&csf.org; WWW: http://www.csf.cirg/curcscn 31)
- 9-11 May 1997  
**SECOND BRITISH COLUMBIA. PALEONTOLOGICAL SYMPOSIUM**. Vancouver. British Columbia., Canada. (Vancouver Paleontologists' Society, Centre Poini Post Office., PO Box. 196.53, Vancouver, BC V5T4E7)
- 11-14 May 1997  
**NEVES CORVO FIELD CONFERENCE** (Meeting of SEC). Lisbon, Portugal. CFJA S Barriga, GEOFCUL, Edificio C2. Pis© 5, Campo Grande 17000 Lisbon. Portugal. Phone: 351 1 750 0066; telefax: 351 1 759 9380; e-mail: Fernand.Barriga@fc.ulpi www: http://NeveSCorvo.geaTc.ul.nl)
- 17-19 May 1997  
 • **EUROPE'S MAJOR COU) DEPOSITS** (International conference and field trip). Newcastle. County Down. Northern Ireland. (Kerr Anderson. Navan Resources pic. Kennedy Road, Navan. Co. Moth. Ireland. Phone: 353 46 22363; telefax: 353 46 22372; e-mail: navanr@isl.ie)
- 19-25 May 1997  
**OTTAWA '97** (Geological Association of Canada., 50th Anniversary Celebrations), Ottawa. Canada. (Conference Secretariat. Ottawa '97. Geological Survey of Canada. 601 Booth St., Ottawa. Ontario. Canada K1A 0E8. Phone: 613 947 7649; telefax: 613 947 7650; e-mail: ottawa97@cmr.ca; www: http://www.emr.ca/~ofaw97/fip:orca.n.gc.ca. directory gsc/oilawa97)

- 22-25 May 1997  
**CANADIAN COASTAL CONFERENCE 1997**, Guelph, Ontario. Canada. (Canadian Coastal Conference '97, c/o Department of Geography, University of Guelph, Guelph. Ontario, Canada N1G 2W1. www: http://www.cciw.ca/bcsea/intro.html)
- 25-30 May 1997  
**GEOCHEMICAL EXPLORATION i mi** International Symposium of AEG), Jerusalem, Israel. (IGES Secretariat. PO Box 50006, Tel Aviv, 61500 Israel. Telefax: 972 : 5140000; e-mail iges@jmail.igs.gov.il)
- 26-30 May 1997  
**EUROPEAN ASSOCIATION OF GEOSCIENTISTS AND ENGINEERS (EAGE)** (59th Conference). Geneva, Switzerland. (EAGE, E H Bornkamp. PO Box 298, NL 3700 AG Zeist. Netherlands. Phone: 31/3069 62 65.5; telefax: 31/306962 640)
- ## Juie
- 1-5 June 1997  
 • **GEOANALYSIS '97**, Vail, Colorado. USA. (Belinda Arbogast. USGS. Federal Center. Box 25046., MS 973., Denver., CO 81225. USA. Telefax: +1-303-2363200; e-mail: sco97@helios.cr.irsg.s.gov)
- 1-6 June 1997  
**SEDIMENTATION, SEDIMENTARY EVENTS AND HYDROCARBON SYSTEMS** (Annual joint CSPG-SIIPM Convention). Calgary, Canada. (CSPG Office, 505 206 7th Avenue SW. Calvin. Alberta, Canada T2P 0W7)
- 2-4 June 1997  
 • **SECOND GENERAL ASSEMBLY OF THE EUROPEAN ASSOCIATION FOR THE CONSERVATION OF THE GEOLOGICAL HERITAGE (PROGEO)**. Tallinn, Estonia. (Rein Raudsep) Geological Survey of Estonia. Kadaktee 80/82., EB0026 Tallinn., Estonia. Phone: 8721 2 593 964; telefax: 072) 6 579664; e-mail: egk@estpak.ee)
- 4-12 June 1997  
 • **TETMYAN AND BOREAL CRETACEOUS** (Working Group Meeting, of K3CP Project 362), Baku. Azerbaijan. (Mascha, Tiemessen. Laboratory of Palaeobotany and Palynology. Budapestlaan 4., 3584 CD Utrecht. The Netherlands. Phone: +31 30 2532n29; +31 30 2535096; e-mail: M.Tiemessen(S\*hev.nio.Nliu.nl)
- 10-12 June 1997  
 • **STRUCTURE AND EVOLUTION OF THE MINERAL WORLD.**, Syktyvkar. Russia. (V Ralchii, Institute of Geology Komi Sei. Centre Ural Div. RAS. 54 Pervimaydiaya str., Syktyvkar 1676Hi Russia. Phone: (8212) 42 00 37; telefax: (8212) 42 53 4ft; e-mail: semw@geolxereza.komi.su)
- 15-18 June 1997  
**SOUTH AMERICAN SYMPOSIUM ON ISOTOPE GEOLOGY**, São Paulo. Brazil. (Professor Miguel A S Basel. PO Box 1134K. São Paulo., Brazil. Phone: (55-11) 818 3994; telefax: (55-11) 8183993; e-mail: bascimastvusp.hr)

August lend) 1997

- **CARBON-CONTAINING FORMATIONS IN GEOLOGICAL HISTORY** (Regional Conference), Fetrozavot&k» Russia. I Dr S i Rybakov. Institute of Geology of Karelian Division of RAS» ul. Pushkina, II I Peirazavitsk» 185000 Russia)

## September

t-5 September 1997

- **CHALLENGES TO CHEMICAL GEOLOGY '97** (10th meeting of the Association of European Geologic Societies), Carlsbad. Czech Republic... (Dr M Novák. Czech Geological Survey, Geolopicksi 6, 152 00 Prague 5.. Czech Republic, lelefcix : +42-2-5818741; e-mail: maegs@cgu.cz; www : ht I p://w w w. eg u .cz/maegs „h trail J

1-5 September 1997

- **GEOLOGY AND ENVIRONMENT. iPm** of 50th Geological Congress of Turkey), Istanbul. Turkey. (Associate Professor Dr Ityas Yitmazer, Yenişehir Bayındır Sokak 7/L PO BÜX 464. Yenişehir 06444. Ankara. Turkey- Phone: 91) 312 435 07 17; telefax: 90 312 434 23 8K; e-mail: tmmobj-o@scrvis2.net.ir; www : ihtl p://w w w. i mfo-niinc x« nnte venu si access/970901 geo.html)

1-5 September 1997

- **FIFTH INTERNATIONAL ECI/KI-ÎTE CONFERENCE**, Asama, Switzerland. (Professor V Trommsdorff and Dr R Schindl. Mineralogy IEC 97., ETH centre.. 8092 Zurich. Switzerland. Phone: XX41 1 632 379:1: idk" fox:XX41 16321088; e-mail: rolftberdw.ethTxxh.)

2-4 September 1997

- **AQUIFER SEDIMENTOLOGY**. HekJelherj;. Germany. CT Aigner, Institute of Geology. University of Tübingen» Sigwarsif 10. 721)76., Tübingen. Germany. Phone: +49 (0) 7071 29 59 23; telefax:+49 (0) 7071 29 69 '90; e-mail : i.aigner@uni-tuebingen.de)

2-4 September 1997

- **PALAEONTOLOGY AND STRATIGRAPHY OF SOUTH AMERICA** (2nd European Meeting, in conjunction with the 18th i AS Regional Meeting on Sedimentology). Heidelberg. Germany.. (Peter Bengtson, Geologisch-Palaontologisches Institut, Im Neuenhçmer Feld 234., D-69120 Heidelberg. Germany. Phone: 49 6221 5482.93.; telefax: 49 6221 548640; e-mail: Peter. Bengtson @ urz. u n i - h e i d e l b e r g - d e . WWW: http://ix.urz.uni-heidelbergjie/-dc«/g«>/lst-sam.htm U

2-^ September 1997

- **SOUTH A TIANIC MESOZOIC CORRELATIONS** (Regional Meeting of IGCP Project 3X1 j. Heidelberg. Germany. (Peter Bengtson.. Geologisch-Palaontologisches Institut. Im Neuenheimer Feld 234., D-n9120 Heidelberg Germany... Phone: 49 &221 54X2\*13; telefax: 49 622 I 548640; e-mail: Fcier.BcnpiscHi(Surz.uni-heidelberg.de)

uni-hcidelhfrp.de/-dc8/gcii/1si-3K I .in «ll I

2-7 September 1997

- **GOIJ> MINERALIZATION AND GRANITOID MAGMATISM IN THE NORTHERN PACIFIC**, Magadan., Russia. (Scientific Secretary of the; Conference. I 6 Prntovaya. SVKNII DVO RAN, Magadan 68500. Russia. Phone: 4 J 3-22-30H5«; telefax: 413-22-3005 i ; e-mai I : nxH # neistrii. magadan. su)

7- 10 September 1997

- **AMERICAN ASSOCIATION OF PETRO-LEUM GEOLOGISTS** (International Conference and Exhibition). Vienna, Austria. f AAPG Convention Department, Box 979» Tulsa, OK 74101, USA. Phone 1/918 560 26 79; telefax: 1/918 560 26 84)

10-12 September 1997

- **INTRAPLA TE MAGMA TISM AND TECTONICS OF SOUTHERN AFRICA**. Harare» Zimbabwe. (The Conference Secretary.. Geological Society of Zimbabwe, PC) Box CY1719, Causeway, Harare, Zimbabwe. E-mail: hmnyan@geology.uz.zw)

10-15 September, 1997

- **FA ULTS AND SUBSURFACE FLUID FLOW: FUNDAMENTALS AND APPLICATIONS TO HYDROGEOLOGY AND PETROLEUM GEOLOGY** » \*Geological Society of America. Pen rose Conference). Albuquerque and Taos, New Mexico. (William C. Haneberg. New Mexico Bureau of Mines and Mineral Resources. New Mexico Institute of Mining and Technology., 2808 Central Avenue SE AUviM|uerqueNMS7106. B-mail: hanehrg@nmt.edu)

10-15 September 1997

- **PALEOGEOGRAPHICAL AND GEODYNAMIC CONDITIONS OF VOLCANIC-SEDIMENTARY ORE FORMATION**, Miass, Russia., (Professor V E Popov. Sredny 74, V.SEGEL. 19902.6 St Petersburg., Russia.. Telefax: 7 812.213 5738; e-mail: vsq@sovam.csomI

1-0-25 September .1997

- **THE ECOLOGICAL SETTING OF EUROPE-FROM THE PAST TO THE FUTURE: HUMAN INFLUENCE ON THE ECOLOGICAL SETTING OF EUROPE SINCE THE BEGINNING OF THE HOLOCENE**, Casilvecchio Pascoli, Italy, f Dr Jnsip Hendeckovic, European Science Foundation. 1 quai Ijezay-Mamcsi:i 67080 Sirashtkurg Cedex... France. Phone: +.13 3 88 767135; telefax: +33 3 88 366987; e - m a i i : e t r e s c o @ c s f . o r g : WWW: hHp://www..Esf.or/gfcwfscsoi

11 • »4 September 1997

- **AiMWBCA-ALPiNE EVOLUTION OF THE WESTERN CARPATHIANS AND RELIK TED AREAS** (International Conference held n th «tccasinin of lme lùHh anniversary «ll the hiith nntP«»or D Andrusov \ itauiKliiva. Slovakia. (Dr Josef Hoik. Slovak (k'li°.ic;il Society. Mlynkii Dol. !. .SK-K17i\*4, Braislavu. Slovak Republic. Phtut: +.12-7-37I15445; telefa.: +.-12-7-37194(h e-n nn i I : hoc(\*j2iids. sinet. sl I

y- i 2 SepU'inher 1997

- **OFFSHORE EUROPE \*97** (Oil and C«is lixihii linn und Conference), Aberdeen. Seal lan». I. I.IK. \*OfisIhçre Horope iPntiRTs-Iiup. Ocr;in ill a UM". Sfr Kin IM on Riiaad. New .MùDckin. Smr rvy K'H 3I.Z.. UK\*

14-18 Scpiemher i 997

- **EXPLORATION '97 14th Decennial liKernational Conference**.. TmmonKK Canada. (I Mac Lend. Geosol Sue, Suiic S(K), 204 Richmond.Sired W. Toronto. Ontario ON M5H2C.4. Canada I

IS-JKScpicniber 1997

- **EAGEEAGE/SEG MOSCOW '97** (International Conference and Exhibition), Moscow, Russia. (I-AGH. W) Box 298., 3700 AC Zeisi. Tlie Netherlands)

!5-25Scpicniber 1997

- **SOUTHERN NEW ENGLAND -OROGEN,, AUSTRALIA** «SCCS Field and Ckneral Mccting 1997). Armiidulc. Ausiralia. (Or kin Meicalf, Depanniem ol"(kolo^y and CicopliiyMcs. University of New England. Armidate. NSW 2351, Australia. Phone: 61 bl /l 7. 2Ä6ft (ele-lax: 61 67 73 3300; e-mail: imetcalc^inci/uuic.cdii.ii A I

16-19 September 1997

- **PIACERS A ND WEA THERED-ROVK MINERAL DEPOSITS** « 11 th IntentionuJ Symposium). Muscnw-Dubna. Russia. (N Patyk Kara.. Institute ol"Geotoly »A Ore Deposits, Petrography, .Mineralogy and GcochciniMry of RAS, Star »inoiuiny per.. 35. Moscow. 109017.. Russia. Phone: 007 095 23(18427: iclciax: ««7 «95 230 ? I 79; e-mail: pkani(twigan..m)sk..wij

2D-25 September 1W7.

- **POIAR REGIONS AND QUATERNARY CUMA TE: QUATERNARY CIJMA TE- INTERHEMISPHERICALCOUPIJNG**, Acqufreddu di Maralca, Italy. (Dr Jusip Hendeckovic. I-Jum»cuc». Science I« Hind ali an. : (U)i; i e/ay.;.M;yiiiesia 67080 Slr;isboorg Cedex. France. Plume: 433 I 8R 767135: ielcl"ax:+33 3 88 3669H7; e - m a i i : c u r c m : f f c f s f . c i f p i : WWW : hip://www.esj. in-g/eyrcsco \

21-27.Sepicmber 1997

- **GROUNDWATER IN THE URBAN ENVIRONMENT**(27th IAH Congress). Noungham. UK. C Professor J D Malher.. Geology Depu Royal Holloway and Bedford New College. Hgham. Surrey "I W20 0EX. UK. Telefax: 7K4 47178»)

22-24 September 1991

- **ELBA ISLAND: A KEY PUZ/JJ LINKING THE CORSO-SARDINIAN MASSIF AND ADRIA**. Oba. IsJand. Jiiily. «Mrs Ornella Pti'llaslii. K.I.CA Serai:iry. Diparimcniodi Seicn/e Terni. unx'fMiii" di l-ircn/e. via L,a Pira 4. Firen/e 5(1121. lialy. Telefax: 139H55123023(12: e niüil: «li«« ccsil I -unili. fi I

23. .28SeptembeI IW7

- **TBCTONICS OF CONTINENTAL INTERIORS** rCical««\_ical SiK-iejy of America l'cnrcisc CinnferncCJ. Brian Head Reson neaf C'edai t'n). i liai« i Mich:iel HjmhurgeT. IXcpt. «I Ck'o.lt"IL.ii Sciences. Indiana, I IniverMiy. BhKHninginn. IN 47405.. USA. li- mai J: luimburi: «« «s iiiiiduu.edu J

2K Sopicinher- 2 (ki-oher t\*W7

- **BRA/JUANGEOPHYSH'AL SO<:iETI,,** (Sll; incrvitMinal C'ingress).. Sa'i PnuUx. Ura/ill. n'efhnskl Piatiran ("ura «m m ce. lean» Vititrelh). irvt'K.Cuixa Pwlat 515. 12201-7<> SüHJoNe' äo\ Caimpins, S;ç'i Paulo. H.rni/ü)

- Li...21 June IW  
 • // *THE INTERNA 11 ONA L CIA Y CONFERENCE*. Ottawa.. Ontario. Canada. [Jemine Perciva]. Geological Society of Canada, MM Rnoih Si. Ottawa. Ontario Kil A C O. Canada. Telefax: 613 V43-12H7»
- »v 17 June 1\*W7  
 • *BIOSTRATIGRAPHY IN PRODUCTION AND BE VEIOPMENT GEOLOGY*. Aberdeen. UK. iVI SiimKmns. IDeparteni of Gcolugv and: Petroleum Geology. University of Aberdeen. Mesim Building. King's College. Aberdeen, AB« IDE. VKj
- IS- P# JtiK\* \W  
 IA *TE QUA TERNARY' COASTAL TECTONICS*. Lviitit UK (Claudio Vita-Fin/i. Geo-In'ical Sciences. University College. Gower SL LOIKKHI WCiK ftBT. Phone: 44 171 3X771>S(>e)t .23X3; telefax: 44 171 38X7614:
- 20-25 June 1W7  
 • *TOURMALINE 1997* (International SympX>NliitijL. Move Mesto na .Moravè. Czech Repohlic. tM Novak. Department of Mineralogy and Petrography., Moravian Museum. Zclny trh6. 6.59 37 Bim» Czech Republic. Telefix iM5\42 21 27 92)
- 23-27 June 1W7  
*ENGINEERING GEOLOGY AND THE /:'.V7iif'»'Afiiiv7\*( International Symttstum ui IAECri. Afiiin.v Greece. tSymposium Secretariat. PO Box 19)I4Ü. GR-1 17 10 Allions, fireecc. Telefax: .301 381 39«); 301*
- ffo 21 June JW7  
 • *L \XRA % "ELLING TECTONIC AND I 'LIMA TIC SIGNA LS IN SEDIMENTARY SUCCESSIONS*, I. imdim. UK. iL F-Vosirick, UnKersiiv oi Hull. Cu>ingki.ra Rd. Hull H1.16 7RX. UK. i

## July

- 1 4 July 1W  
 • *EUROPEAN CURRENT RESEARCH ON FLUID INCLUSIONS*, Nancy.. France.. {XV HCROH. CRTXLiLi. BP 23. 54501 Vendnevr- cle>-Nancy Codex. France. Phone: +3.3-83-441 «AM} {elej;w:+33-83-44029; e-mail: a ~n \* H t\*c re g u. c n r s, n a n e y. IV)
- L...10 July 1W7  
*REMOTE SENSING TECHNOLOGY, MEASUREMENTS AND ANALYSIS* flrd International Conference\*. Copenhagen. Denmark. (Robert Risers... ERIM Ccmfufences. Box I! 341)01. Ann Arhor. M! 4K11.V4ÜCM. USA. Plume: 313 W4 1200: telefax: 313 W4 5123; e-mail: raeclert\*eirim.ofg; WWW : http://w ww .erim.org/CONF/)
- 7-11 July 1997  
 • *SE.G/JEMO/EAGE ISTANBUL '97* <Inernational Gcofophysical Conference and Exposition). Istanbul.. Turkey. (HAG.R Conferences hv. PO lkm 298, 3700 ACS Zcist. The Netherlands)
- 12 17 July 1997  
*VERTEBRATE MORPHOLOGY* (5ih Intern- innal Cmigrress). Bristol. UK. (J M V Raynor. School of Bioghical Sciences., University of Bristol. BSS IUG. UK. Pfiwne: 44 117 92K M1: telefax:44 117025 7374; e-mail: icvm97C@briMi»kac.uk)

1997

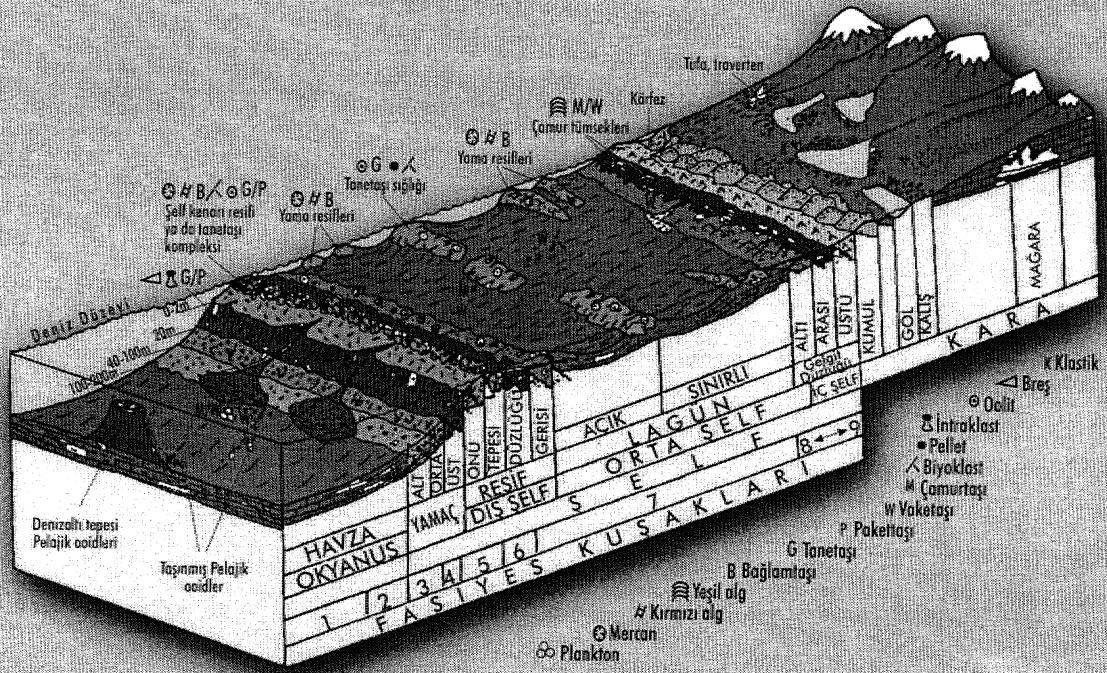
- WATER POLLUTION MODEUNG. MEASURING AND PREDICTION i-ih** Imteraaiiititil Ctnniferece k nWesscx. liiNiimic of Technology. Ashtirst Lodge. Ashum. SouihampUHI's(>407AA. UK. Plaw.44 17»> 2M2853: e-mail: WIT6»!wessex.wiicr.iii.ac.uk. hup : // w w w . w i t c r i m i . a c . n k )
- 2(^-24 July IWJ  
 M *HYDROTHERMAL REACTIONS* «5th InternatNial Symposium), (iatlinhurs. Tennessee. USA- USHE '97. ORML."Bk% 4500S. PO Bw 2008. Oak Ridge. TN >7Hf I • 611(1 USA. Phone +1-423-376-5 H W: \*-1-423-574-4961 .: e-mail: tklp&Mrml.gov »
- 20-27 July 1997  
*DEVONIAN CYCUCITY AND SEQUENCE STRATIGRAPHY* (SuhciMiunissimi on Devonian Stratigraphy Sympoviyra unit licltl trip«). Rochester. New York. USA. tWittisun Kirchgasscr. Department of'Geokig>. SUN Y Potsdam., Potsdam. NY 13676-2294. USA. Phone: 315 267 2295: tele!;<: 315 267 3170: e-mail: kirchgwt@potsdam.edu)
- 27-31 July 1997  
*OSTROCOBA* (13th International Symposium). Greenwich. UK. ÖSD '97. Stcuil of Eanh Sciences, University cif GrCeowich. Meclwai: Towns Cainpus. Quilham Murititnc. Kent ME4 4AW.UK. K-matl: iso97@grecnwith.at:MK 1
- 3Ü July«9 August 1997  
*CELEBRATION OF THE BICENTENARY OF CHARLES LYELL AND JAMES MUTTON*. LoruJcMi and Edinburgh\* UK. IP iacbsim. 8GS. Keywurth. NetTingham NCI12 5(Ci.,. Phone: 0115 936 3100: idelax: »I \> 9.Vi 321)0)
- 28July-1 August 1997  
*GEOSCIENCE EDUCATION* 12nd Imrcnaticinal Conference),. Hi la. Hawaii. (Or l-rank Wait Ireton. GeoSciBd II Local Arrangement Ccoi>r- dinalor. American Geophysical Union.. XKKI Florida Avenue. NW. Washington DC 200CW. USA.. E-mail: fireumCurkoKiiHis.agu.org)
- 28 July-.2 August 199«  
 • *THE UPPER PERMIAN STRATOTYPES OF THE VOLGA REGION*. Kazan. Russia. (Dr Natalia K. Esaulova. Kazanium Stale University. IH Kretnlcvciskaya- sir.. IKA/an 420KB., Tatar», Russia. Phone: (7) B43 2315 425; telefax: (7i H43 2364 7W|
- August 1997  
*ECONOMIC SVPERACCUMUIA TIONS OF METAI'S IN THE LITHOSPHERE* «3rd Annual Meeting of IGCP Project 354). Puerto Ordaz, Venezuela. Pnitbisor P Rongfti. Institute of Mineral Deposits, Chinese Academy of Geological Sciences., But'wanzhung Rd., Beijing KM37. China., Telefax: 86 10 6Ä3 1 («94)
- August .1997  
*GANITES AND ASSOCIA TED MINERALIZATIONS* (2nd International Symposium). Salvador.. Brazil. (SGM-2nd ISOAM. General SecrturKU, Av. 3. 39». PUttaforma IV, CAB 41746-««). Salvador, Buhia. Brazil. Telefax: 5571 231 5655)

## August

- 3-10 August 1997  
 • *FIFTEENTH BRAZILIAN CONGRESS OF PAIAEONTOLOGY*. Km Claro. Brazil. {ReinuldoJ Bertint. Department of .Sedimentary 'Geology. Institute of Cieosck'nce/UNCSP Rio Claro-SP. 135i>6-^MI Brazil PtKkne: 019 534 0522. ext. 234; teleru: 019 534 0327; e-matl: bertin»6?ge«4K)l.uespt.aosp.br)
- 4-8 August 1W7  
 • *VJCHILEAN GFAHJOGICAL CONGRESS*, Antu-lag.asta, Chiite. (Coniité Oig.anizudör., VIII Congresn Geok »g ici > Ch ile no. D>ejpu.rta.meni;oe Ciocias Cleologicas., Uni versiad Culolica del Nurte. Antofajusia. AV. Angamos OnIO.CuHlla 1280, Chile. Phone: +56-55241148 {205/368>: telefax: Ö6-55-248198: e-mai l : dge« » tog i# « »conn pa x\*ecu n. uc n. c I|)
- 4-8 August 1997  
*SEG/EAGE ISTANBUL '97 INTERNATIONAL GEOPHYSICAL CONFERENCE AND EXPOSITION*. Istanbul. Turkey.(SEG, PO BOX 702740, Tulsa. Oklahoma 74170, USA)
- 6-8 August, S 997  
 • *IX PERUVIAN GEOLOGICAL CONGRESS*. lima., Peru. (Cormitc Organizadoir del IX Congresu Peruano tie Geologie, C/o Societad Geologien del Peru. Arnaldo Manjue/. 2227., Lima IS., Peni. Phone: +511-4633947; telefax: +511-2612362)
- III -13 August 1997  
 • *RESEARCH AND EXPLORATION— WHERE DO THEY MEET?* «4th Biennial Meeting of i he Society Applied m Mineral Deposits) (Congress Office/SGA Meeting, 1997, Univer- sity of Turku, Lemminkatsenleau i 8-1 HB. FIN-20520 Turku. Finland. Phoiac: + 358-21-333 634.2; telefax: +358-2 S-333 6410. e-mail: 17-21 August 1997  
*PALEOFO.RAMS '97*. Bcllingham. Washington. USA, (Charles A Ross. Department of Geology, Western Washington University.. Beling.ha.ra» WA 98225-9080. USA. Phone: 360650 3634; telefax: 360 650 3148; e-mail: rt is&j rp @ henson.cc. wwu.edu)
- 18-29 August 1997  
*INTERNATIONAL ASSOCIATION OF SEIS- MOLOGY AND PHYSICS OF THE EARTH'S INTERIOR*. (29th General Assem- bly). Thessaioniki. Greece.. (29th IASPEI general assembly geophysical laboratory. Univer- sity. GR-54(i(>6, Thessadoniki. Greece. Phone: 30/31 99« 528; e-muih iaspei @atymptX.auth.gr)
- 19-20 August 1997  
*MINERAL EQUILIBRIA AND DATA BASES* {International Meeting). Helsinki. Finland. (Pentti HöUtä. Geulogical Survey n/Finland. SF-021S0 Espm.. Finland. Phone: 338 0 469323 S 2; telefax: .358 I) 4622.05]...
- 2K Augusi-3 September 1997  
*GEOMORPHOLOGY* (4üi [oternationol Oinference of Iniemational Association of Géoraorphologists). Bologna. Italy. (Planning Congres», s r 1 Vin Crociali 2, 1-4013« Bologna., Italy D



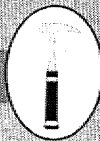
# KARBONAT SEDİMANTOLOJİSİ



**Dr. Eşref ATABEY**  
Jeoloji Yüksek Mühendisi

Ankara, 1997

TMMOB



JEOLOJİ MÜHENDİSLERİ ODASI YAYINLARI: 45